

WFB elevator balance compensation chain WFB全塑型电梯平衡补偿链



性能介绍 Performance

WFB 型电梯平衡补偿链, 又称 QL 型电梯平衡补偿链, 是一种给电梯提供理想且平稳运行的平衡补偿产品。该产品采用全自动焊机电焊锚链外裹弹性 PVC 改性体, 外形为圆柱形, 补偿重量及消音性能优异。具有外包层弹性好, 强度高、阻燃、耐老化、适用温度范围广, 运转弯曲半径小等优点。使用后电梯运行平稳、流畅、噪声低, 适用于环境温度 -20℃ 至 +60℃ 之间, 梯速不高于 2.5 米 / 秒的中高速电梯。

注: 建议配套使用本厂提供的悬挂装置和导向装置, 便于安装, 利于安全、平稳运行。

WFB Elevator compensation chain, also known as QL elevator compensation chain, it can ensure the elevator working under an ideal and stable state. It is made from electric-welding anchor chain which covered with elastic rubber, its outline is cylinder, the weight and silence function is perfect. it has the following strong traits: greater elasticity, higher strength, flame retardant, anti-aging, wider temperature adaption range(-20℃~+60℃), smaller bending radius, etc. After using this kind of compensation chain, the operation of your elevator will be stable and smoothly, and working with low noise. WFB(QL) is used for the elevator with rated speed of below and equal to 2.5m/s.

Note: we advise you to use installation kits and guide device made by Haixun Draka. It will be convenient for you to install and make it run safely and stably.

基本参数 Basic parameters

规格型号 Model No	单位重量 (kg/m) Unit weight	产品外径 (mm) External diameter	链环直径 (mm) Diameter of link	破断负荷 (kN) Broken load	弯曲直径 (mm) Bending diameter
QL (WFB) 075	1.12 ± 0.20	24 ± 1.5	6.0 ± 0.3	≥ 15.80	≤ 660
QL (WFB) 100	1.49 ± 0.20	27 ± 1.5	6.5 ± 0.3	≥ 18.60	≤ 660
QL (WFB) 125	1.88 ± 0.20	30 ± 1.5	7.0 ± 0.3	≥ 25.20	≤ 660
QL (WFB) 150	2.24 ± 0.20	32 ± 1.5	7.5 ± 0.3	≥ 33.00	≤ 660
QL (WFB) 175	2.63 ± 0.20	35 ± 1.5	8.5 ± 0.3	≥ 41.80	≤ 710
QL (WFB) 200	2.98 ± 0.20	38 ± 1.5	8.5 ± 0.3	≥ 41.80	≤ 710
QL (WFB) 250	3.73 ± 0.20	42 ± 1.5	10.0 ± 0.3	≥ 56.00	≤ 710
QL (WFB) 300	4.47 ± 0.20	44 ± 1.5	11.0 ± 0.3	≥ 67.50	≤ 710
QL (WFB) 350	5.22 ± 0.20	48 ± 1.5	12.0 ± 0.3	≥ 82.60	≤ 760
QL (WFB) 400	5.96 ± 0.20	52 ± 1.5	13.0 ± 0.3	≥ 90.50	≤ 760

QLH elevator balance compensation chain QLH全塑型电梯平衡补偿链



专利号 patent NO.: ZL201520550395.2

性能介绍 Performance

QLH 全塑型电梯平衡补偿链, 是一种给电梯提供理想且平稳运行的平衡补偿产品。该产品采用全自动焊机电焊锚链外裹弹性 PVC 弹性体, 外形为圆柱形, 补偿重量及消音的性能优异。具有外包层弹性好, 强度高、阻燃、耐老化、适用温度范围广, 运转弯曲半径小等优点。使用后电梯运行平稳、流畅、噪声低, 适用于环境温度 -20℃ 至 +60℃ 之间, 梯速不高于 3.5 米 / 秒的中高速电梯。

注: 建议配套使用本厂提供的悬挂装置和导向装置, 便于安装, 利于平稳运行。

QLH compensation chain. Patent NO.: ZL201520550395.2

QLH compensation chain can ensure the elevator working under an ideal and stable state. It is made from electric-welding anchor chain which covered with elastic rubber and ball shot, its outline is cylinder, the weight and silence function is perfect. it has the following strong traits: greater elasticity, higher strength, flame retardant, anti-aging, wider temperature adaption range(-20℃~+60℃), smaller bending radius, etc. After using this kind of compensation chain, the operation of your elevator will be stable and smoothly, and working with low noise. It is used for the elevator with rated speed of below and equal to 3.5m/s.

Note: we advise you to use installation kits and guide device made by Haixun Draka. It will be convenient for you to install and make it run safely and stably.

基本参数 Basic parameters

规格型号 Model No	单位重量 (kg/m) Unit weight	产品外径 (mm) External diameter	链环直径 (mm) Diameter of link	破断负荷 (kN) Broken load	弯曲直径 (mm) Bending diameter
QLH075	1.1 ± 0.2	24 ± 1.5	5.5 ± 0.3	15.80	≤ 650
QLH100	1.5 ± 0.2	29 ± 1.5	6 ± 0.3	18.60	≤ 650
QLH125	1.88 ± 0.2	31 ± 1.5	7 ± 0.3	25.20	≤ 650
QLH150	2.2 ± 0.2	35 ± 1.5	8 ± 0.3	33.00	≤ 650
QLH200	3 ± 0.2	38 ± 1.5	9 ± 0.3	41.80	≤ 700
QLH250	3.7 ± 0.2	42 ± 1.5	10.5 ± 0.3	56.00	≤ 700
QLH300	4.5 ± 0.2	44 ± 1.5	11.5 ± 0.3	67.50	≤ 700
QLH350	5.2 ± 0.2	49 ± 1.5	12.7 ± 0.3	82.60	≤ 750
QLH400	6.0 ± 0.2	52 ± 1.5	13.5 ± 0.3	90.50	≤ 750

WFC elevator balance compensation chain WFC浸塑型电梯平衡补偿链



专利号: ZL201520499731.5

性能介绍 Performance

WFC型电梯平衡补偿链,是一种给电梯提供理想且平稳运行的平衡补偿产品。该产品由全自动焊机电链链外均匀无间隙浸塑PVC浸塑液后加热塑化而成。外形为链环状,克服了包塑补偿链易撕裂的缺点。适用于环境温度-20℃至+60℃之间,梯速不高于1.75米/秒的中低速电梯。

注:建议配套使用本厂提供的悬挂装置和导向装置,便于安装,利于安全、平稳运行。

WFC Elevator compensation chain Patent NO.: ZL201520499731.5

WFC compensation chain can ensure the elevator working under an ideal and stable state. WFC is evenly coated by a layer of PVC liquid out of the high quality electric-welding chain, heated and solidified, and finally forming compensation chain into chain-in-chain shape. And clear the gaps between the every links, with no noise. WFC overcomes the shortcoming that PVC-coating chain is easily tore. Temperature adaption range(-20℃--+60℃). It is used for the elevator with rated speed of below and equal to 1.75m/s.

Note: we advise you to use installation kits and guide device made by Haixun Draka. It will be convenient for you to install and make it run safely and stably.

基本参数 Basic parameters

规格型号 Model No.	单位重量 (kg/m) Unit weight	产品宽度 (mm) Width	金属链径 (mm) Diameter of link	破断载荷 (kN) Broken load	弯曲直径 (mm) Bending diameter
WFC050	0.88 ± 0.20	21.0 ± 2	6.0 ± 0.3	≥18.60	280 ± 50
WFC075	1.12 ± 0.20	26.0 ± 2	7.0 ± 0.3	≥25.20	280 ± 50
WFC100	1.49 ± 0.20	29.0 ± 2	8.0 ± 0.3	≥33.00	300 ± 50
WFC125	1.88 ± 0.20	32.0 ± 2	9.0 ± 0.3	≥41.80	300 ± 50
WFC150	2.24 ± 0.20	36.0 ± 2	10.0 ± 0.3	≥56.00	300 ± 50
WFC175	2.50 ± 0.20	36.0 ± 2	10.5 ± 0.3	≥56.00	300 ± 50
WFC200	2.98 ± 0.20	39.0 ± 2	11.0 ± 0.3	≥67.50	300 ± 50
WFC225	3.20 ± 0.20	43.0 ± 2	12.0 ± 0.3	≥82.60	300 ± 50
WFC250	3.73 ± 0.20	46.0 ± 2	13.0 ± 0.3	≥90.50	300 ± 50
WFC300	4.47 ± 0.20	50.0 ± 2	14.0 ± 0.3	≥101.90	320 ± 50
WFC350	5.22 ± 0.20	53.0 ± 2	15.0 ± 0.3	≥107.00	320 ± 50
WFC400	5.96 ± 0.20	56.0 ± 2	16.0 ± 0.3	≥132.30	320 ± 50

Chain with intertwined rope 穿绳电梯平衡补偿链



性能介绍 Performance

该产品使用经过镀锌的全自动焊机电链链穿麻绳或麻绳精心制作而成,具有弯曲直径小,强度高,使用寿命长等优点。适用于环境温度-20℃至+60℃之间,梯速不高于1.75米/秒的中低速电梯。

This kind compensation chain is precisely made from electric-welding chain and jute rope or other kind ropes. It has strong traits, such as: smaller bending radius, higher strength, longer using time. Temperature adaption range(-20℃--+60℃), intertwined rope compensation chain is used for the elevator with rated speed of below and equal to 1.75m/s.

规格型号 Model No.	单位重量 (kg/m) Unit weight	链环直径 (mm) Diameter of link	破断载荷 (≥kN) Broken load
WFCSD6	0.70 ± 0.20	6.0 ± 0.3	18.60
WFCSD7	1.00 ± 0.20	7.0 ± 0.3	25.20
WFCSD8	1.40 ± 0.20	8.0 ± 0.3	33.00
WFCSD9	1.80 ± 0.20	9.0 ± 0.3	41.80
WFCSD10	2.20 ± 0.20	10.0 ± 0.3	56.00
WFCSD11	2.70 ± 0.20	11.0 ± 0.3	67.50
WFCSD12	3.20 ± 0.20	12.0 ± 0.3	82.60
WFCSD14	4.80 ± 0.20	14.0 ± 0.3	101.9

Plastic-wrapped flex fire-retardant balance compensating chain 包塑弹性阻燃电梯平衡补偿链



包塑弹性阻燃电梯平衡补偿链选用优质全自动焊机电链链经表面处理(电镀或发黑防锈处理等)后包裹一层复合PVC塑料,经特殊工艺加工而成。适用于环境温度-20℃至+60℃之间,梯速不高于1.75米/秒的中低速电梯。

It is made from electric-welding anchor chain (electroplating or black coating treatment) which covered with elastic rubber. Temperature adaption range(-20℃--+60℃). WFB is used for the elevator with rated speed of below and equal to 1.75m/s.

规格型号 Model No.	单位重量 (kg/m) Unit weight	链环直径 (mm) Diameter of link	破断载荷 (kN) Broken load	弯曲直径 (mm) Bending diameter
WFBSD6	0.88 ± 0.20	6.0 ± 0.3	18.60	260 ± 50
WFBSD7	1.12 ± 0.20	7.0 ± 0.3	25.20	260 ± 50
WFBSD8	1.49 ± 0.20	8.0 ± 0.3	33.00	300 ± 50
WFBSD9	2.00 ± 0.20	9.0 ± 0.3	41.80	300 ± 50
WFBSD10	2.24 ± 0.20	10.0 ± 0.3	56.00	300 ± 50
WFBSD11	2.96 ± 0.20	11.0 ± 0.3	67.50	300 ± 50
WFBSD12	3.20 ± 0.20	12.0 ± 0.3	82.60	320 ± 50
WFBSD13	3.73 ± 0.20	13.0 ± 0.3	90.50	320 ± 50
WFBSD14	4.47 ± 0.20	14.0 ± 0.3	101.90	320 ± 50

WFBG elevator balance compensation chain WFBG全塑、钢球型电梯平衡补偿链



专利号 patent NO.: ZL201520550395.2

安装说明 Installation Direction

WFBG型电梯平衡补偿链,是一种给电梯提供理想且平稳运行的平衡补偿产品。该产品采用全自动焊机电链链外裹弹性PVC和PVC弹性体及钢球复合层,外形为圆柱形,补偿重量及消音的性能优异。具有外包裹弹性好,强度高、阻燃、耐老化、适用温度范围广,运转弯曲半径小等优点。使用后电梯运行平稳,流畅、噪声低,适用于环境温度-20℃至+60℃之间,梯速不高于3.5米/秒的中高速电梯。

注:建议配套使用本厂提供的悬挂装置和导向装置,便于安装,利于安全、平稳运行。

WFBG compensation chain. Patent NO.: ZL201520550395.2

WFBG compensation chain can ensure the elevator working under an ideal and stable state. It is made from electric-welding anchor chain which covered with elastic rubber and ball shot, its outline is cylinder, the weight and silence function is perfect. It has the following strong traits: greater elasticity, higher strength, flame retardant, anti-aging, wider temperature adaption range(-20℃--+60℃), smaller bending radius, etc. After using this kind of compensation chain, the operation of your elevator will be stable and smoothly, and working with low noise. WFBG is used for the elevator with rated speed of below and equal to 3.5m/s.

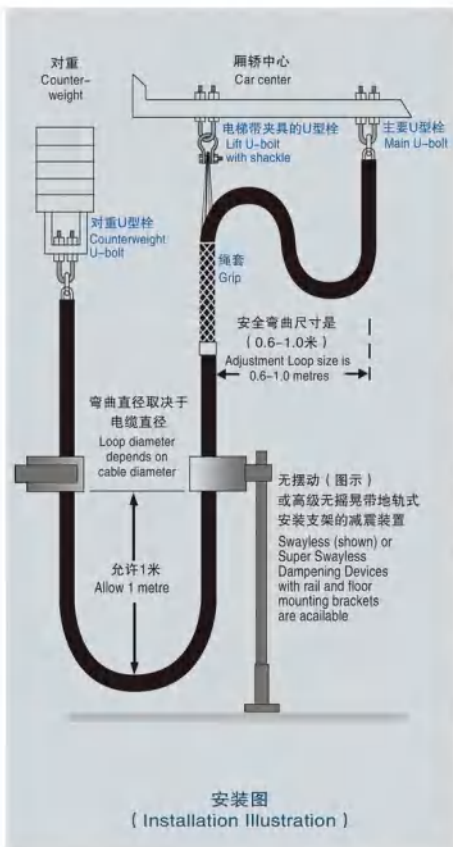
Note: we advise you to use installation kits and guide device made by Haixun Draka. It will be convenient for you to install and make it run safely and stably.

规格型号 Model No.	单位重量 (kg/m) Unit weight	产品外径 (mm) External diameter	链环直径 (mm) Diameter of link	破断载荷 (kN) Broken load	弯曲直径 (mm) Bending diameter
WFB075G	1.10 ± 0.15	24 ± 1.5	5.5 ± 0.3	≥15.80	≤610
WFB100G	1.50 ± 0.15	26 ± 1.5	5.5 ± 0.3	≥15.80	≤610
WFB125G	1.80 ± 0.15	29 ± 1.5	6.0 ± 0.3	≥18.60	≤610
WFB150G	2.20 ± 0.15	31 ± 1.5	7.0 ± 0.3	≥25.20	≤610
WFB175G	2.60 ± 0.20	33 ± 1.5	8.0 ± 0.3	≥33.00	≤660
WFB200G	3.00 ± 0.20	36 ± 1.5	8.0 ± 0.3	≥33.00	≤660
WFB250G	3.70 ± 0.20	40 ± 1.5	9.0 ± 0.3	≥41.80	≤660
WFB300G	4.50 ± 0.25	42 ± 1.5	10.0 ± 0.3	≥56.00	≤660
WFB350G	5.20 ± 0.25	46 ± 1.5	11.0 ± 0.3	≥67.50	≤710
WFB400G	6.00 ± 0.25	50 ± 1.5	12.0 ± 0.3	≥82.60	≤710

Installation Direction for WF series balance Compensating chain

WF系列电梯平衡补偿链安装使用说明

安装说明 Installation Direction



安装时应去除平衡补偿链在卷取过程产生的螺旋、缠绕状，以防止外裹橡胶、塑料层因扭曲造成龟裂或剥离。

去除补偿链螺旋、缠绕状的方法：当平衡补偿链轿底一端挂好后，开慢车至顶端，量好平衡补偿链所需长度，截断，将补偿链拖在地面的部分卷起扎好，距离地面1米以上，静态悬挂24小时，待放清缠绕后，将补偿链穿导向装置，挂起另一端。

导向装置中心线与补偿链悬挂点在同一条垂线上，减少补偿链与导向装置之间的摩擦，减少噪音，延长使用寿命，避免意外故障的发生。

导向装置安装点距平衡补偿链弯曲底部垂直距离不小于1米，确保补偿链运行时（特别是电梯初始加速时）在底部有足够的缓冲，避免缓冲过小造成补偿链和导向装置之间产生阻力，导致补偿链拉坏导向，甚至拉断补偿链。补偿链弯曲底部距坑道地面应大于15厘米，避免呢产生托底，造成磨坏。

补偿链运行一段时间，按电梯维保要求维护、保养时，需检查平衡补偿链的悬挂情况，并及时调整悬挂点及悬挂长度。

Before installation, eliminate twist caused by rolling when packing in order to prevent rubber or plastic to be cracked or peeled by twisting during working.

The way to eliminate twist: when one side of the compensating chain is hung on the bottom of the cabinet, run the elevator to the top side slowly, measure the chain length required, cut it, roll and wrap the left on the ground, keep it over 1 meter from the ground, and then hang other side. After keeping the elevator working for many days, re-check whether there is any twist or not, if still, please repeat above-mentioned work method.

The center line of dampening device should be kept in the same vertical line with the hanging point, to prevent any accidental breakdown caused by more and more friction between compensating chain and dampening device for a long term.

The minimum distance is one meter between the installation point of dampening device and the bottom of loop of compensating chain, to prevent incurvation radius too short resistance leading to cause chain broken during movement.

The distance between the surface of underground tunnel and the bottom of bending compensation chain should be greater than 15cm, in order to avoid bottoming and making the compensation chain damaged.

When maintain the elevator after compensation chain operated for a period of time, need to check the balance compensation chain suspension, and adjust the suspension point and length of suspension in time.

性能介绍 Performance

导向装置是引导限制平衡链运行轨迹，同时防止平衡链高速运行时产生震荡或摇摆而设计的。当补偿链静止不动时，补偿链应与导向装置的导向轮不接触，而平衡链安装时应垂直穿过导向装置中心。使用本公司专有设计的导向装置能大大提高补偿链的使用寿命，同时使整个补偿链装置系统更加安全、可靠。

悬挂装置是由不锈钢绳套、U型栓、S钩、吊环组成。客户可根据设计要求自行配成。

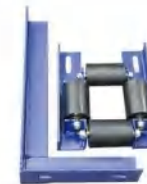
Guide Mechanism Device is specially designed for restraining the running orbit of compensation chain and preventing the shake rocks chiring the compensation chain running in high speed Compensation chain should be from the guide mechanism when it is still. When being installed, the compensation chain should be plumb across the center of guide mechanism. It will greatly extend the compensation chain service life and assure the whole compensation device system more safe and reliable.

Suspension Device is consists of galvanized mesh grips, U-bolt, S-hook and hanging ring. Customers can make their design according to different requirements.



A型导向装置 Guide Mechanism A

序号 Item	DX01-001
识别号 ID No.	A型



I型导向装置 Guide Mechanism I

序号 Item	DX12-001
识别号 ID No.	K320102



C型导向装置 Guide Mechanism C

序号 Item	DX03-001
识别号 ID No.	K320301



H型导向装置 Guide Mechanism H

序号 Item	DX07-001
识别号 ID No.	DAA22640系列



M型导向装置 Guide Mechanism M

序号 Item	DX10-001
识别号 ID No.	57605186


毛刷导向装置 Brush guide device

序号 Item	DX02-001
识别号 ID No.	HDMS1406

专利号ZL201420398148.0


T型平衡防护罩 Balance protective cover T

序号 Item	DX08-001
识别号 ID No.	653673G01


平衡防护罩 Balance protective cover

序号 Item	XG06-001
识别号 ID No.	EXA384B


F型导向装置 Guide Mechanism F

序号 Item	DX06-001
识别号 ID No.	57006966


E型导向装置 Guide Mechanism E

序号 Item	DX05-001
识别号 ID No.	57006966


U型栓 U-shaped bolt

序号 Item	XG01-001
识别号 ID No.	M6 M8 M10 M12 M14

产品概述 Description

 用于轿厢底端和对重连接。
 To connect the car bottom and counter weight

S钩 S Hook

序号 Item	XG02-001	XG02-002
识别号 ID No.	φ12 φ14 A ₁ A ₂ A ₃	

产品概述 Description

 用于补偿链与轿厢连接。
 Connect the car and compensation chain

吊环 shackle

序号 Item	XG03-001
识别号 ID No.	XAA172B

产品概述 Description

 用于补偿链与S钩连接
 Connect compensation Chain and S hook

绳套 Stainless Strip


序号 Item	识别号 ID No.	长度(mm) Length	外径(mm) Outer Dia.	内径(mm) Inner Dia.	钢丝绳规格(mm) Specification	产品概述 Description
XG04-001	φ100	710 ± 10	43 ± 1	31 ± 1	1.2	由多股钢丝绳拧编而成，用于悬挂平衡链、电缆，便于调节长度。 Interwisted by strands of wire rope and it used to append the compensation Chain and adjust the length of cables.
XG04-002	φ200	710 ± 10	52 ± 1	40 ± 1	1.2	
XG04-003	φ250	710 ± 10	58 ± 1	46 ± 1	1.5	
XG04-004	φ400	710 ± 10	66 ± 1	54 ± 1	1.8	

绳头组件 Wedge Socket

LY415P LY415P

序号 Item	识别号 ID No.	产品概述 Description
PT01-001	Φ12-13	钢丝绳用锻件整体绳头组件。 Solid Forging Wedge Socket used for Wire Rope.



Φ12钢丝绳用绳头组合 Φ12 Wedge Socket used for Wire Rope

序号 Item	识别号 ID No.	产品概述 Description
PT02-001	LA031GX	锥套头选用35号钢无缝管锻造。 Taper Sleeve Head is precisely forged by #35 steel.



Φ12-13钢丝绳用绳头组合 Φ12-13 Wedge Socket used for Wire Rope

序号 Item	识别号 ID No.	产品概述 Description
PT03-001	LW16801445C	锥套头选用35号钢无缝管锻造。 Taper Sleeve Head is forged by #35 steel seamless tube.



Φ8-10钢丝绳用生绳头组合 Φ8-10 Wedge Socket used for Wire Rope

序号 Item	识别号 ID No.	产品概述 Description
PT04-001	LT832682	锥套头选用35号钢、QT500-7球铁精密铸造两种。 Taper Sleeve Head is precisely forged by #35 steel or QT500-7 ductile iron.



Φ8钢丝绳用绳头组合 Φ8 Wedge Socket used for Wire Rope

序号 Item	识别号 ID No.	产品概述 Description
PT05-001	LJ395931	锥套头选用Q235A钢板焊制。 Taper Sleeve Head is welded by Q235A steel plate.



部件号 Part Number	规格 Product Code	重量 Cable Weight lbs/ft • kg/m	铁链直径 Chain Trade Size inches • mm	补偿链外径 Cable Nom. OD inches • mm	最大悬挂长度 Max. Hang Length feet • meters	弯曲直径 Nom. Loop Width inches • mm
18-075-97	WF 075	0.75 • 1.1	3/16 • 5.5	1.05 • 27	600 • 183	22 • 540
18-010-97	WF 10	1.0 • 1.5	3/16 • 5.5	1.15 • 29	600 • 183	24 • 610
18-015-97	WF 15	1.5 • 2.2	1/4 • 7	1.36 • 35	600 • 183	24 • 610
18-020-97	WF 20	2.0 • 3.0	1/4 • 7	1.50 • 38	520 • 158	26 • 660
18-025-97	WF 25	2.5 • 3.7	5/16 • 8	1.63 • 41	600 • 183	26 • 660
18-030-97	WF 30	3.0 • 4.5	5/16 • 8	1.77 • 45	505 • 154	26 • 660
18-035-97	WF 35	3.5 • 5.2	3/8 • 10	1.91 • 49	600 • 183	27 • 690
18-040-97	WF 40	4.0 • 6.0	3/8 • 10	2.03 • 52	530 • 162	27 • 690

Whisper-Flex补偿链可在-15℃至+60℃顺畅运行，可用于梯速不高于3.56m/s的电梯。

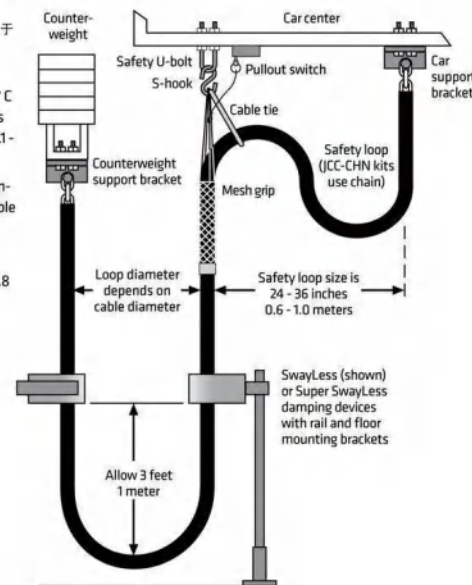
为Whisper-Flex补偿链特别设计的支架、U型柱、S钩和重载不锈钢绳套必须使用，以确保安装的安全。

特雷卡电梯防晃导向装置被推荐用于最小化梯速高于1.8m/s的电梯补偿链的摇晃。

Whisper-Flex compensating cable provides smooth operation at temperatures of 5° F to 140° F • -15° C to +60° C and, in the US, can be used for elevators with rated speeds of no greater than 700 ft/min • 3.56 m/sec (per ASME A17.1-2013, Rule 2.21.4.2 Compensating Rope Tie-Down).

Support brackets, U-bolts, S-hooks, and heavy duty stainless steel grips specifically designed for Whisper-Flex cable must be used to ensure safe installations.

Draka Elevator damping devices are recommended to minimize cable sway for car speeds above 350 ft/min • 1.8 m/sec.



不锈钢绳套 - 双眼/双编/闭合同
Stainless steel mesh grip - double eye/double weave/closed mesh

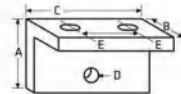
部件号 Part Number	适用于 For use on Cables	眼长 Eye Length inches + mm	网长 Nom. Mesh Length inches + mm	最大载荷 Maximum Load lbs + kg
024-20-1504	WF 075, WF 10	12.0 • 305	14.0 • 356	1200 • 545
024-20-1470	WF 15	12.0 • 305	15.0 • 381	1640 • 745
024-20-1510	WF 20, WF 25	12.0 • 305	17.0 • 432	1660 • 755
024-20-1499	WF 30, WF 35	12.0 • 305	19.0 • 483	1800 • 818
024-20-1542	WF 40	12.0 • 305	21.0 • 533	1800 • 818



最大载荷基于5:1安全系数的最小破断。
Maximum Load is based on minimum breaking strength with a 5:1 safety factor.

支架 - 需2个
Support bracket - two required

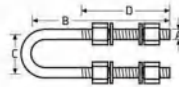
部件号 Part Number	适用于 For use on Cables	外部尺寸 Overall Size (AxBxC) in + mm	孔径 Hole D Dia. in + mm	膝孔尺寸 Slot Size in + mm	膝孔间距 Slot E to E in + mm
n/a	WF 075 WF 10	3 x 3 x 5 • 76 x 76 x 127	3/8 • 9.5	1/2 x 7/8 • 13 x 22	2-5/8 • 66.7
n/a	WF/SFC 15 to WF/SFC 30	3 x 3 x 5 • 76 x 76 x 127	7/16 • 11	1/2 x 7/8 • 13 x 22	2-5/8 • 66.7
n/a	WF/SFC 35 to WF/SFC 40	3 x 3 x 5 • 76 x 76 x 127	1/2 • 13	1/2 x 7/8 • 13 x 22	2-5/8 • 66.7



支架作为JCC套件的一部分售卖，不能单独订购。
Support brackets are sold as part of the JCC kits and cannot be ordered separately.

U型栓 - 需1个
Steel U-bolt - one required

部件号 Part Number	适用于 For use on Cables	尺寸A Dim. A in + mm	尺寸B Dim. B in + mm	尺寸C Dim. C in + mm	尺寸T Dim. T in + mm	最大载荷 Maximum Load* lbs + kg
n/a	WF 075, WF 10 WF/SFC 15 to WF/SFC 40	3/8 • 9.5	4-3/4 • 121	2-7/8 • 73	3 • 76	2320 • 1052



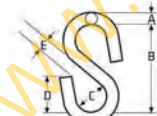
U型栓作为JCC套件的一部分售卖，不能单独订购。*最大载荷基于5:1安全系数的最小破断。

U-bolts are sold as part of the JCC kits and cannot be ordered separately.

*Maximum Load is based on minimum breaking strength with a 5:1 safety factor.

S钩 - 需1个 - 可单独更换
Steel S-hook - one required - available for individual replacement

部件号 Part Number	适用于 For use on Cables	尺寸A Dim. A in + mm	尺寸B Dim. B in + mm	尺寸C Dim. C in + mm	尺寸D Dim. D in + mm	尺寸E Dim. E in + mm	屈服强度 Yield Strength lbs + kg
79-011	WF 075, WF 10	3/8 • 9.5	2-3/8 • 60	3/4 • 19	31/32 • 25	17/32 • 14	1200 • 544
79-013	WF/SFC 15 to WF/SFC 20	3/8 • 9.5	2-3/4 • 70	3/4 • 19	1-1/8 • 29	1/2 • 13	2400 • 1088
79-016	WF/SFC 25 to WF/SFC 40	17/32 • 13.5	3 • 76	1 • 25	1-1/8 • 29	19/32 • 15	4800 • 2177



由于S钩设计用于在电梯受阻中减缓可能的受损，因此如特雷卡补偿链安装指南中所示，这个部件可用于更换。
Since the S-Hook is designed to yield in order to alleviate possible damage in the event of obstruction, this item is available for replacement purposes as shown in the Draka Compensation Cable Installation Guide.

扣扣 - 需1个或2个用于JCC-CHN安装配件中
Coupling - one or two required for JCC-CHN installation - see page 71

部件号 Part Number	适用于 For use on Cables	适用的链环尺寸 For Chain Size in + mm	尺寸A Dim. A in + mm	尺寸B Dim. B in + mm	工作载荷限制 Working Load Limit lbs + kg
79-116	WF 075 to 30	9/32 • 7	2-17/32 • 64	15/16 • 23	4300 • 1950
79-117	WF/SFC 35 to 40	3/8 • 10	3-7/16 • 87	2-3/8 • 60	8800 • 4000



带大导轮的超级防晃导向装置
Super SwayLess with larger rollers

部件号 Part Number	适用于 Application	外部尺寸 Overall Dimensions in + mm	安装孔直径 Mounting Hole Dia. in + mm	数量 Quantity
WF-RDD4	Whisper-Flex, Steadi-Flex Replacement pads	8 x 8 x 31 • 203 x 203 x 79	1/2 • 13	1
ISOLATION PADS		1.5 X 1.5 • 38.1 X 38.1	1/2 • 13	4

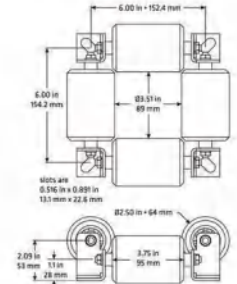


新款超级防晃导向WF-RDD4设计用于任何尺寸的Whisper-Flex或Steady-Flex补偿链。其被推荐用于速度高达3.56m/s的补偿链的顺畅运行。
自由旋转的尼龙大导轮设计用于大井道，提高耐久性。导轮尺寸的增加同时能获得更安静的运行。填充油脂的高强度轴承用于承受更高的压力和Steady-Flex补偿链的影响。
每根补偿链需要2套超级防晃导向装置。安装支架单独销售（见下方）
The new Super SwayLess WF-RDD4 is designed for use on any size Whisper-Flex® or Steady-Flex® compensating cable. It is recommended for smooth compensating cable operation for speeds up to 700 feet/min (3.56 m/sec).

Larger free-turning nylon rollers have been engineered with a bigger shaft for increased durability. The increased size of the rollers also permits quieter operation. Grease-filled high-strength bearings are built to handle the higher pressures and impact of Steady-Flex cables.

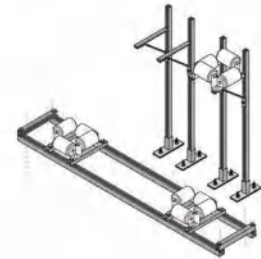
This enhanced design uses the formed steel mounting brackets from the earlier version of the Super SwayLess for simpler installation and cushioned isolation pads to reduce vibration noise.

Two Super SwayLess devices are required per cable. Mounting brackets are sold separately (below).



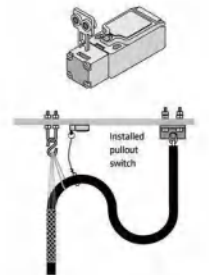
超级防晃导向装置安装支架
Super SwayLess mounting brackets

部件号 Part Number	描述 Description
SSL-FMB-48	(2) floor-mounted brackets, adjustable to 48 in. • 1.2 m height, order WF-RDD4 separately
SSL-RMB-72	Counterweight rail-mounted bracket, adjustable to 72 in. • 1.8 m width, order WF-RDD4 separately
SSL-RMB-2	Counterweight rail-mounted bracket, adjustable to 72 in. • 1.8 m width, includes (2) WF-RDD4 devices



拉拽开关和安装配件
Pullout Switch and Installation Kit

部件号 Part Number	描述 Description
36-207	Pullout switch, with flat key actuator and rotating head
WF-POSK	Pullout switch installation kit, which includes one pullout switch (#36-207), two split O-rings, two cable ties, two 4 x 40 mm pan-head screws, two 4 mm hex nuts, four 4 mm flat washers and two 4 mm lock washers.



地震仪 Seismograph

部件号 Part Number	描述 Description
DRK-S701-ROHS	EMD seismic detector with relays for external sensors - AC or DC power
30016	Replacement battery for DRK-S701
78-108	Fuse for DRK-S701

DRK-S701-ROHS可检测地震活动，并发送电梯控制信号以根据震级采取合适的行动。安装得当的话，地震仪可检测到潜在的危险地震活动，并向控制系统发出警报，使电梯停靠最近的楼层以疏散乘客。它同时可连接到特雷卡对重偏移感应器。

The DRK-S701-ROHS EMD detects and measures seismic events and signals elevator controls to take appropriate action based on their magnitude. Properly installed, the EMD will detect a potentially dangerous seismic event and alert the controller to stop the car at the nearest floor to discharge the passengers. It can also be connected to the Draka Ring-on-a-String counterweight displacement sensor.



对重偏移感应器 Counterweight displacement kit ("ring-on-a-string")

部件号 Part Number	描述 Description
CDH-R8	Counterweight displacement kit, mounts to T89 guide rails (order cable [CDH-L500, CDH-L1000 or CDH-L1500] separately)
CDH-R12	Counterweight displacement kit, mounts to T127 guide rails (order cable [CDH-L500, CDH-L1000 or CDH-L1500] separately)
CDH-L500	Cable, 500 ft • 152 m length, 1/16 in. • 1.6 mm diameter, with thimbles and clips (use for up to 250 ft • 71 m of rise)
CDH-L1000	Cable, 1000 ft • 304 m length, 1/16 in. • 1.6 mm diameter, with thimbles and clips (use for up to 500 ft. • 152 m of rise)
CDH-L1500	Cable, 1500 ft • 456 m length, 1/16 in. • 1.6 mm diameter, with thimbles and clips (use for up to 750 ft • 223 m of rise)
040219	Cable, cut to length, does not include attachment hardware, please specify length
79-103	Thimble, for 1/16 in. • 1.6 mm cable attachment (replacement part)
79-104	Wire rope clip, for 1/16 in. • 1.6 mm cable attachment (replacement part)
36-178	Wire cutters, for cutting steel cable



通用悬挂系统——美国专利号5080199 Universal Hanging System - US patent 5,080,199

部件号 Part Number	适用的钢丝绳直径 For Steel Core Dia. inches • mm	电缆数量 Number/ of Cables Held	每根电缆最大载荷 Max. per cable Load lbs • kg
3/32-1 SBKT	3/32 • 2.4	1 cable	500 • 227
1/8-1 SBKT	1/8 • 3.2	1 cable	500 • 227
5/32-1 SBKT-R	5/32 • 4.0	1 cable	700 • 318
1/4-1 SBKT	1/4 • 6.4	1 cable	1750 • 794



通用悬挂系统 适用于2根电缆 Universal hanging system for two cables

部件号 Part Number	适用的钢丝绳直径 For Steel Core Dia. inches • mm	电缆数量 Number/ of Cables Held	每根电缆最大载荷 Max. per cable Load lbs • kg
5/32-2 SBKT-R	5/32 • 4.0	2 cables	700 • 318
1/4-2 SBKT	1/4 • 6.4	2 cables	1250 • 568

These are two-cable versions of the Universal Hanging System.



配件推荐 Replacement strand vises

部件号 Part Number	描述 Description
3/32 PINS-A	Replacement strand vise for 3/32 in. rope
1/8 PINS-A	Replacement strand vise for 1/8 in. rope
5/32 PINS-A	Replacement strand vise for 5/32 in. rope
1/4 PINS-A	Replacement strand vise for 1/4 in. rope

减震类 Dampening Products

金属与非金属粘合是公司的技术特长, 该产品具有粘强度高、弹性好、减震性能优等特点。减震、缓冲装置适用于各种载重的客、货梯。且根据载重量不同, 装备不同硬度的产品。

产品使用天然橡胶经科学配方精制成高性能橡胶弹性体, 通过专门工艺与金属结构件粘合而成, 可按客户要求设计生产不同规格产品, 特别适用于曳引机减震。本公司可根据客户图纸设计加工各种类型的橡胶与金属、塑料与金属、橡胶与塑料粘合的产品。

The technical expertise of our company is metal & non-metal conglutination. These products are highly sticky and elastic and also can decrease vibration. The shock absorber and buffer device are used for all kinds of elevator, and we can make it in different hardness according to different load of elevator.

By scientific formulary, the natural rubber is refined into good functional flexible body, and then glue with metal piece to be final product, we can design an produce different specification according to the requirement from clients, which specially used in shock absorbing for traction engine. We accept customers designs and drawings.

减震橡胶A型 Shock absorber and buffer device A

序号 Item	识别号 ID No.
JS01-001	I 型(TK21-00)
JS01-002	II型(DEK3R67664E)
JS01-003	III型(DEK3R67664F)
JS01-004	IV型(DEK3R06975)



减震橡胶B型 Shock absorber and buffer device B

序号 Item	识别号 ID No.
JS02-001	57001975
JS02-002	DEK3R05468



减震垫 Dampener

序号 Item	识别号 ID No.
JS03-001	PAA310E3

产品概述 Description
用于电梯轿厢的减震。
Mainly for shock absorption.



橡胶缓冲件 Buffer

序号 Item	识别号 ID No.
JS04-001	36-135-M1



减震底座 Dampening base

序号 Item	识别号 ID No.
JS05-001	DAEA17C791

产品概述 Description
用于电梯轿厢的减震。
Mainly for shock absorption.



减震垫 Dampener

序号 Item	识别号 ID No.
JS06-001	PAA310BS1/S2

产品概述 Description
用于电梯轿厢的减震。
Mainly for shock absorption.



减震垫 Dampener

序号 Item	识别号 ID No.
JS07-001	P13301661

产品概述 Description
用于电梯轿厢的减震。
Mainly for shock absorption.



门导靴 Guide shoe

序号 Item	JS06-001
识别号 ID No.	Z395AD

产品概述 Description
 用于电梯轿厢的减震。
 Mainly for shock absorption.



导靴 Guide shoe

序号 Item	JS07-001
识别号 ID No.	DX23

产品概述 Description
 固定轿厢与导轨。
 To fix the car and guide rail.



扶梯导轨 Escalator guide rail

序号 Item	JS09-001
识别号 ID No.	GAA483CNJ

产品概述 Description
 弹性好。减振性能强。
 Good elasticity and shock absorption.



限位块 Limit piece

序号 Item	JS08-001
识别号 ID No.	DYJ0310CV1

产品概述 Description
 具有限位作用。
 Has the limit function.



扶手入口保护 Handrail guide insert guard

序号 Item	XJ05-001	XJ05-002
识别号 ID No.	SFV809639	GAA384JZ1

产品概述 Description
 耐磨，对扶手带有保护作用。
 It has the wearable, protect the handrail strap.



隔音板 Sound Insulation Pad

序号 Item	XJ07-001	XJ07-002
识别号 ID No.	XAA310EZ1	XAA310FA2

产品概述 Description
 具有隔音作用。
 It has the sound insulation.



油盒 Oil Box

序号 Item	DLFJ06-001
识别号 ID No.	

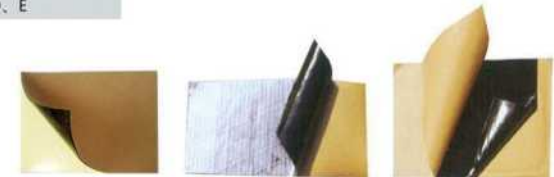
产品概述 Description
 用于电梯导轨润滑。
 Uses in the elevator guide rail lubrication.



隔音橡胶 Sound Insulation Rubber sheet

序号 Item	DLFJ06-001
识别号 ID No.	3E411399-C、D、E

产品概述 Description
 用于电梯装潢
 Used for elevator decoration





导轨支架装箱
Rail Bracket Packing



无机房机器底座装箱
Machine Base Packing



井道部件装箱
Pit Components Packing



导轨支架装箱
Rail Bracket Packing



立柱装箱
Column Parts Packing



高速梯钢丝绳护套与限速器座
Wire rope Protective guard and
Speed governor Base Packing



缓冲器底座
Buffer Base



绳头安装支架
Rope Installation Bracket



后对重机器底座
Back-countweight Base



侧梁 Side Beam



绳头安装支架
Rope Installation Bracket



轿厢侧导轨支架 Rail Bracket



高速梯底座 High-speed Elevator Base



对重架 Counterweight Frame



有机房机器底座
Machine Base of Elevator with Machine-room



机器梁
Machine Beam



轿底
Car Bottom



横梁 Cross Beam



承重槽钢组件 U-bar Component



无机房机器底座系列
Machine Base of
Machine-roomless Elevator



无机房机器底座系列
Machine Base of
Machine-roomless Elevator



底梁 Bottom Beam



轿底称重装置
Weighing Device



侧梁裸包箱
Packaging for Side Beam



缓冲器座
Buffer Base



标准门锁
Standard lockset



急停开关
Emergency Switch